

Control and interlink

Overhead stirrers

Magnetic stirrers

Thermostats

Evaporators

Peristaltic pumps

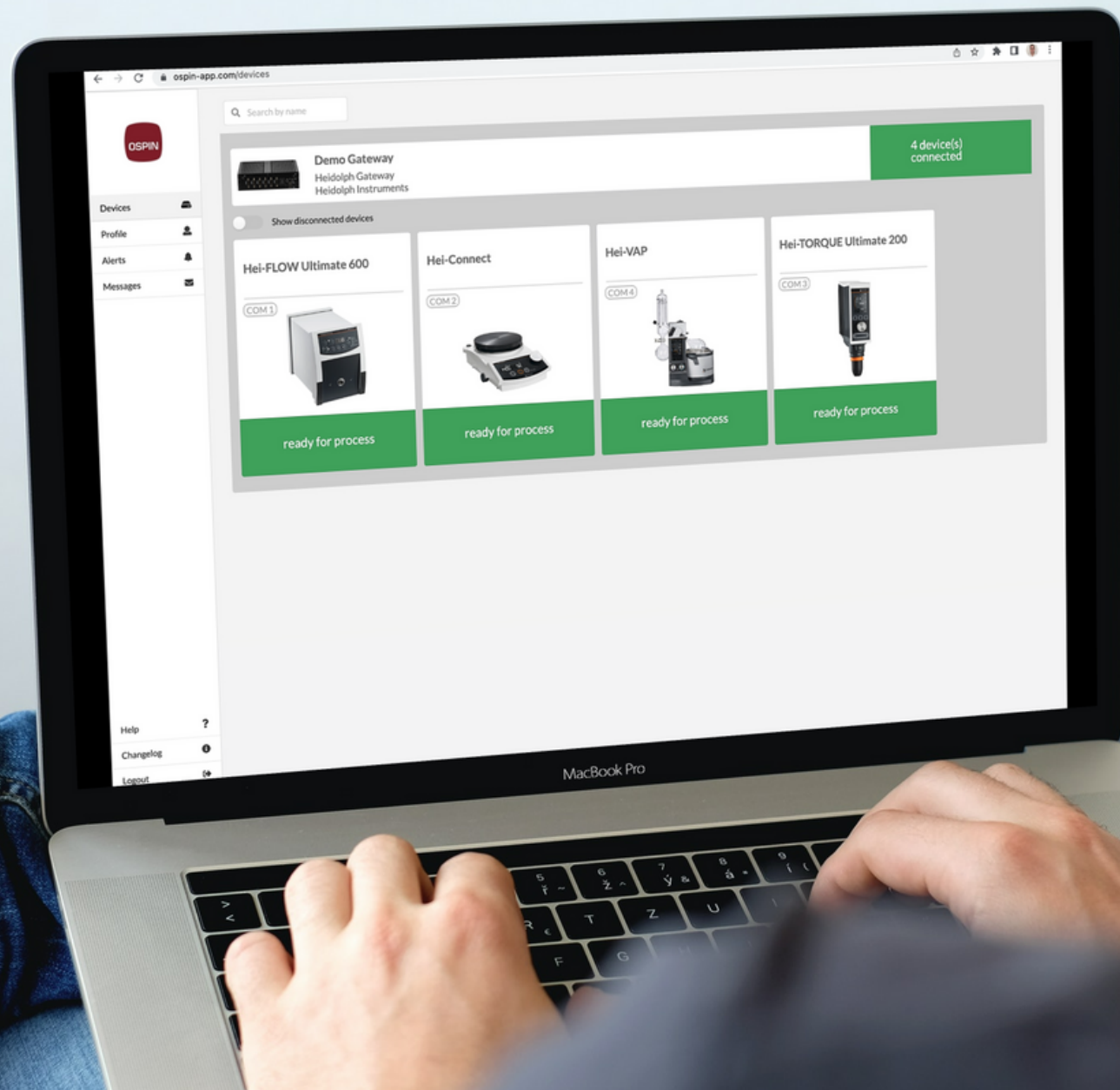
Scales

pH sensors

DO sensors

Conductivity sensors

Temperature sensors



Hei-PROCESS - The lab of the future starts here

Do you want to:



Control multiple devices during complex processes?



Have your experimental data automatically recorded, safely stored, and always accessible?



Reduce human errors and increase reproducibility?



Run processes remotely 24/7?

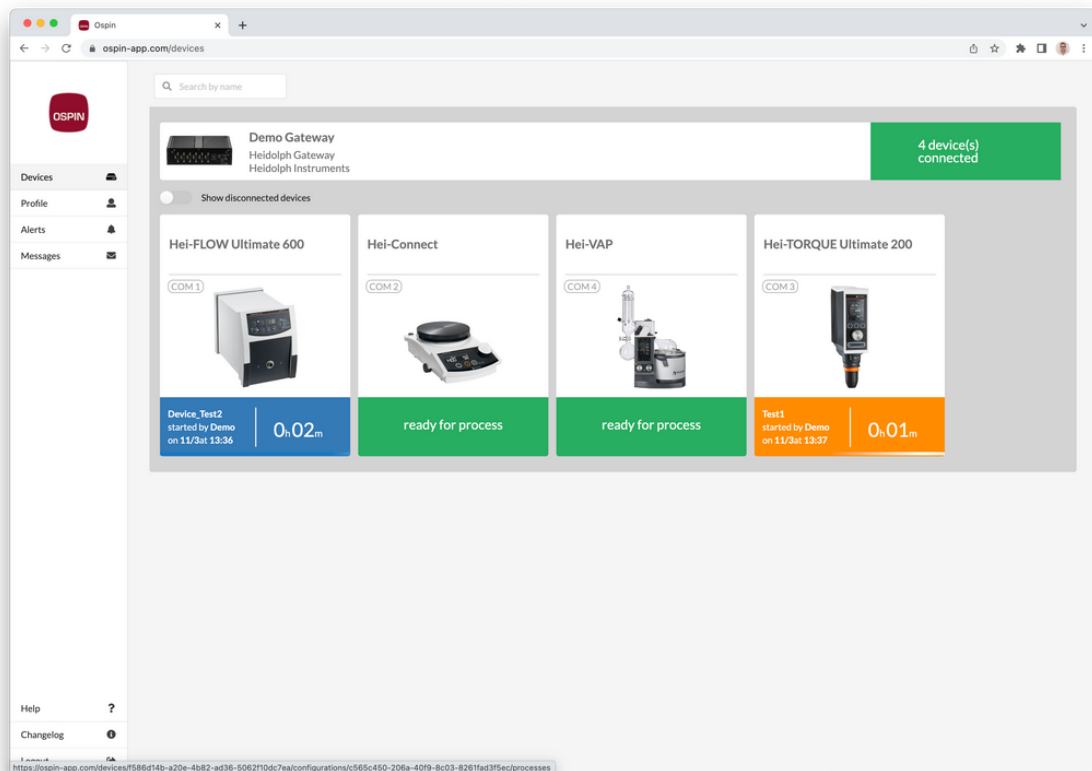


Have a setup tailored to your experiment and that you can modify on the fly?

Then Hei-PROCESS is what you need

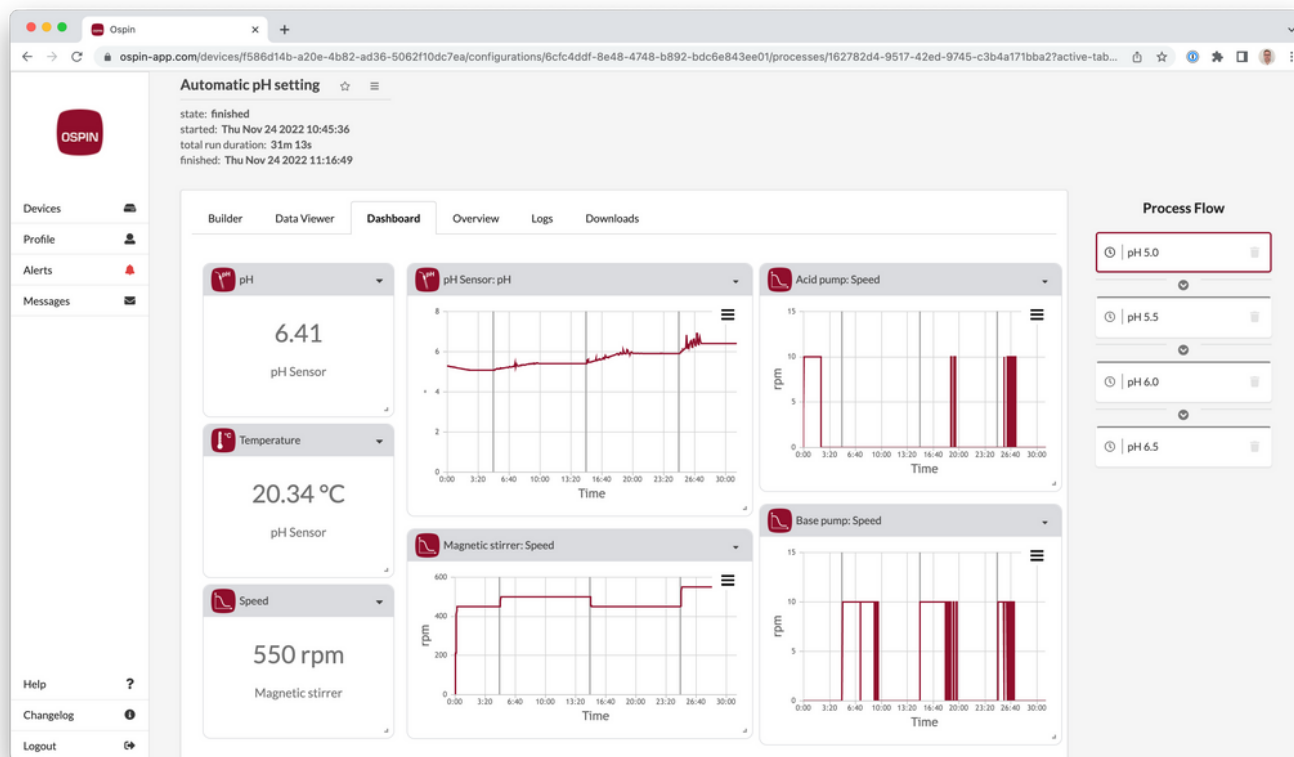
Multi-device and multi-phase processes

- Control processes including any number of devices
- Program complex processes including any number of phases that can be grouped in loops
- Make on-the-fly process adjustments that are automatically tracked
- Interlink devices and set control loops and end-point conditions



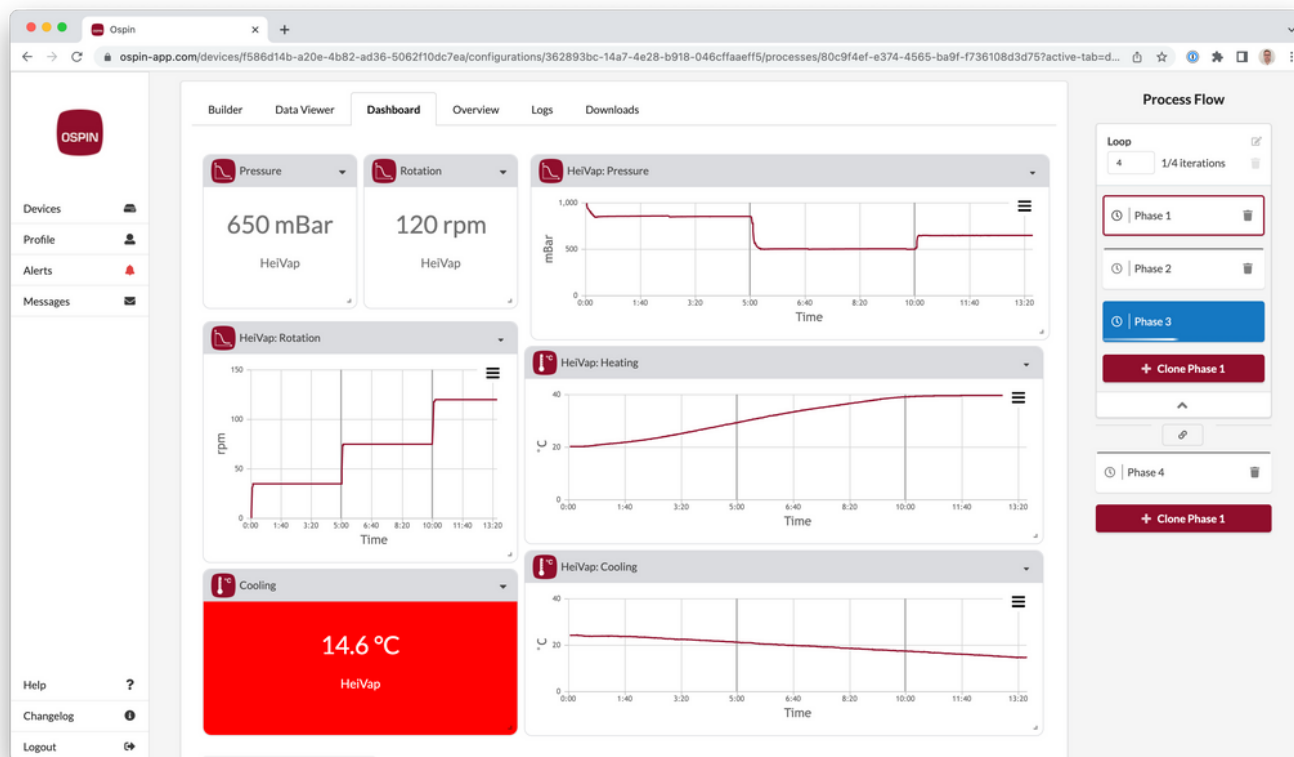
No more manual logging and errors

- Let the software record all your experiment data and visualize them in a customizable dashboard
- Clone process recipes for reproducible and consistent results
- Create reports in one click or download data for further analysis
- Have all your data saved in the cloud and accessible from any browser



Remote, continuous processing

- Have devices working together for fully automated processes that do not need any manual intervention
- Monitor and control your processes and devices remotely from any browser
- Set individual device warnings in your dashboard



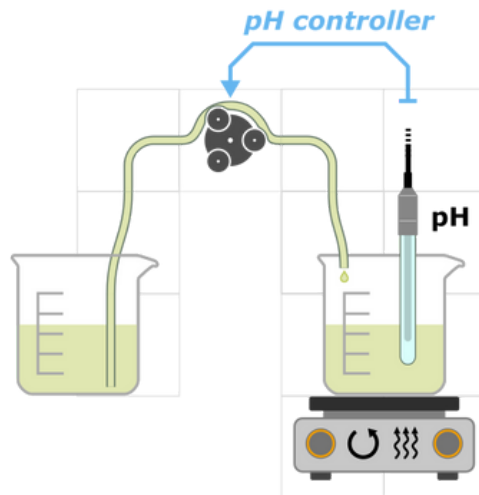
Customizable, flexible setups

- Choose device combinations for tailored experiment automation
- Modify device combinations when your experiment changes
- Interlink devices to create new functionalities on the fly



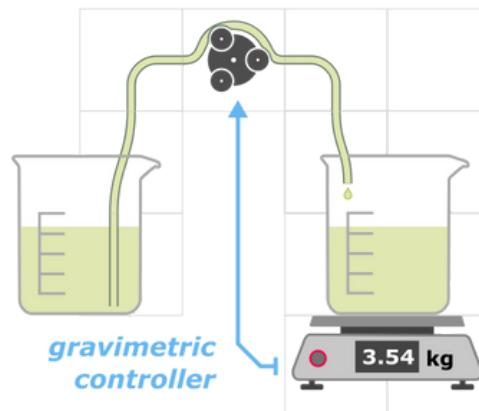
Pre-defined setups

Pump-based controllers



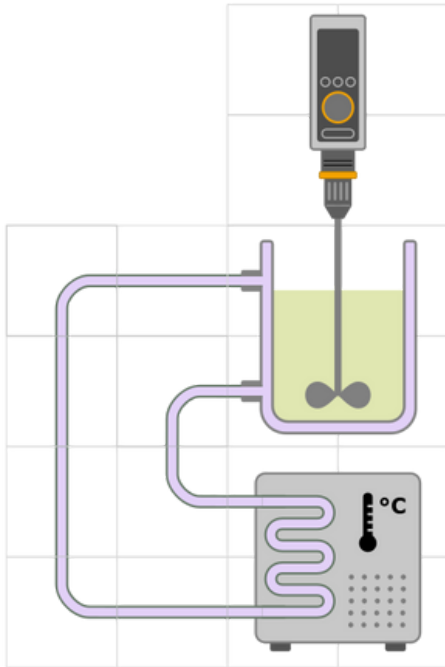
This device combination allows you to reach and control the desired pH in your vessel: when the measured pH is below your target, an alkaline solution is pumped into your vessel.

Of course, you can also define an acid-based controller that can actively lower the pH.

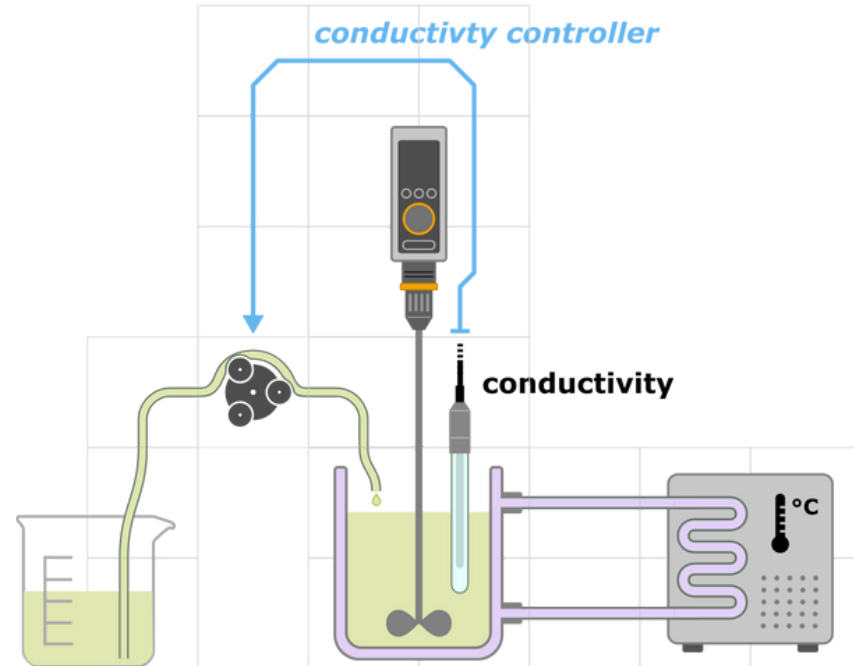


With this device combination, you can dose solutions reliably, accurately, and automatically. You set in the software UI the mass of solution you want to add to your vessel and the pump dispenses it automatically based on the feedback from the scale: when the target amount is reached, the pump stops.

Chemical reactor



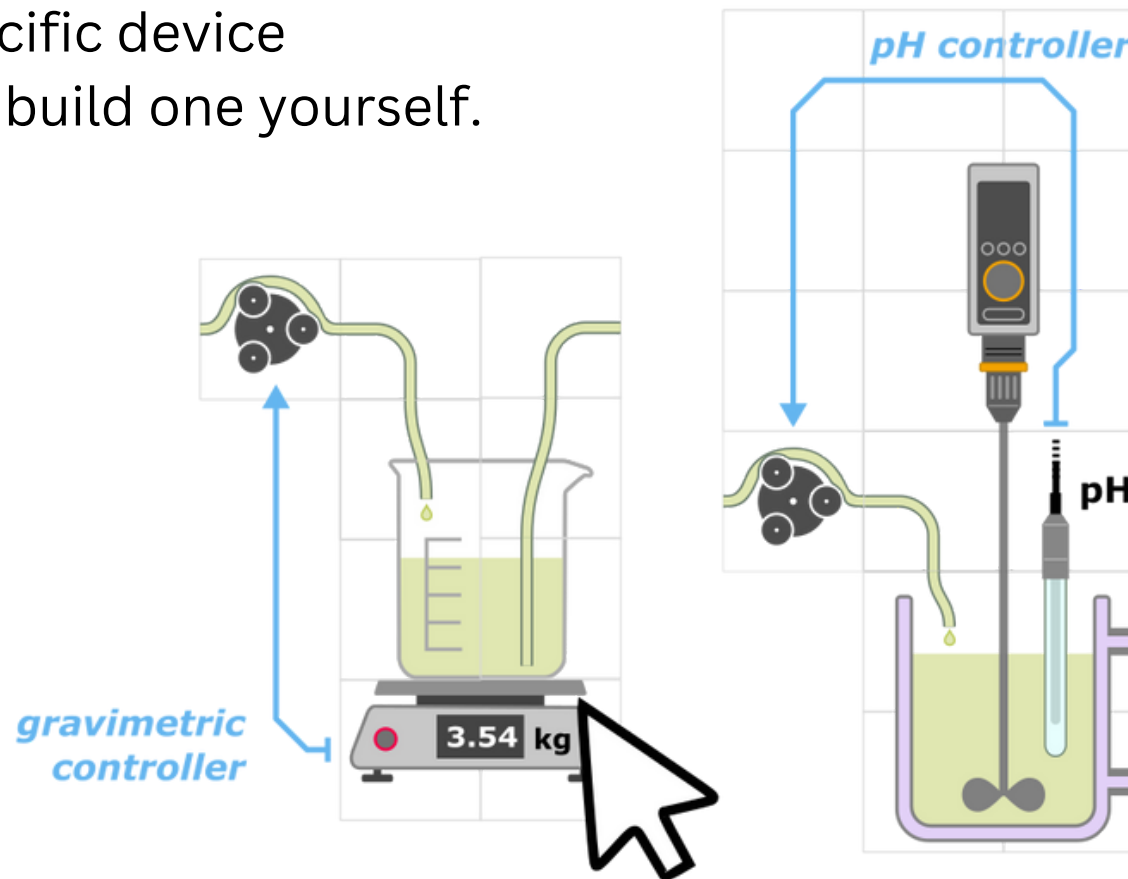
Start simple - This basic version includes an overhead stirrer and a thermostat and enables you to program the basic environmental parameters for chemical reactions. The stirrer speed can also be controlled by the temperature in the vessel.



Add more modules later - To the basic version you can add several sensors, actuators, and controllers, such as pumps and pH and conductivity controllers.

Create your own

Ask us for a specific device combination or build one yourself.



Software licenses

General capabilities	Core	Expert	Ultimate
	Up to 6 independent devices or pre-defined setups including up to 2 devices and 1 sensor.	For custom-predefined setups including any number of sensors and actuators.	Create your setup yourself based on combinations of compatible devices.
Pre-defined setups	Gravimetric dosing, pH controller, and basic chemical reactor	Chemical reactor with add-ons	

Available devices and gateway

Magnetic stirrers	Heidolph
Overhead stirrers	Heidolph
Thermostats	Heidolph, Lauda, Huber
Evaporators	Heidolph
Peristaltic pumps	Heidolph
Scales	Kern & Sohn
pH sensors	Hamilton
DO sensors	Hamilton
Conductivity sensors	Hamilton
Temperature sensors	Heidolph



- 6 RS232 ports, extendable through USB serial multiplier
- Ethernet port
- 2 USB ports

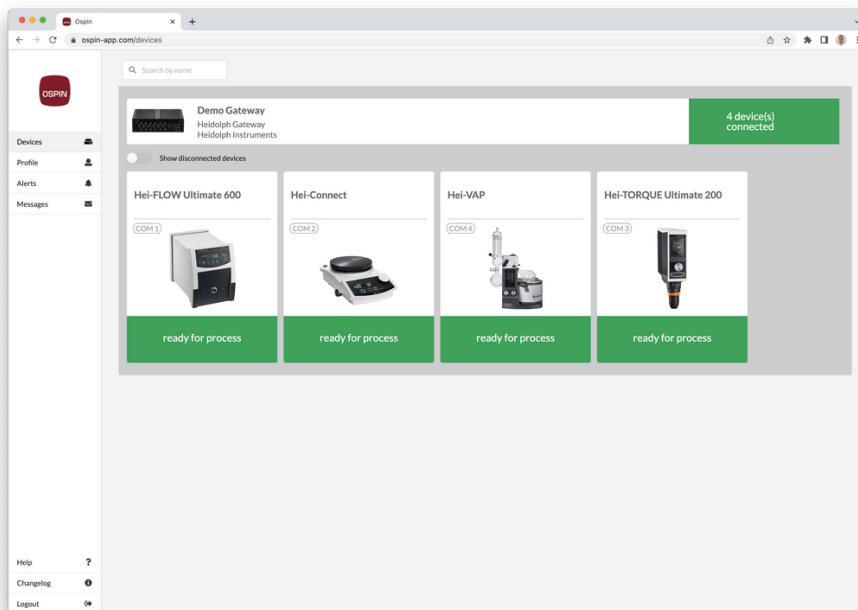
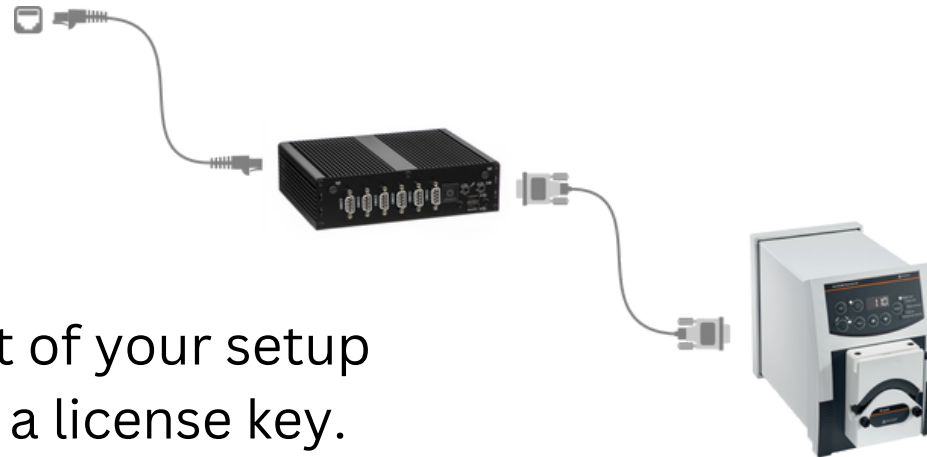
How to start

STEP 1

You get from us:

- the lab devices part of your setup
- and a gateway with a license key.

Connect the gateway to the internet and the devices to the gateway.



STEP 2

Go to ospin-app.com, create a user account, and enter the license key your received with your gateway: your devices are now online and ready to be used.

STEP 3

Design your process by creating process phases and defining for each phase device settings and phase transitions (manual-, time-, condition-based). Then click on start, sit back, and relax!

The screenshot displays the OSPIN web application interface. The browser address bar shows the URL: `ospin-app.com/devices/f586d14b-a20e-4b82-ad36-5062f10dc7ea/processes/b46ec3af-6a5c-45e0-a357-3b871143d16f?active-tab=builder`. The interface is divided into several sections:

- Left Sidebar:** Contains navigation links for Devices, Profile, Alerts, Messages, Help, Changelog, and Logout.
- Top Navigation:** Includes tabs for Builder, Data Viewer, Dashboard, Overview, Logs, and Downloads.
- Main Content Area:**
 - Cool Down:** The active process phase. It has a description field (0/500 characters) and a duration selector set to 'Duration'. The duration is configured as 0 days, 0 hours, 1 minute, and 0 seconds.
 - Hei-Connect:** A section for device settings, currently set to 'COM 2'. It includes:
 - Enable stirring:** A toggle switch that is turned on.
 - Speed target:** A text input field with the value '100' and a unit dropdown set to 'rpm'.
 - Enable heating:** A toggle switch that is turned on.
 - Temperature target:** A text input field with the value '45' and a unit dropdown set to '°C'.
 - Temperature control mode:** A dropdown menu set to 'Fast'.
- Right Sidebar:** Titled 'Process Flow', it shows a sequence of steps: 'Warm Up', 'Particle Addition', 'Group 1' (with a sub-step '3'), 'Fast Mix', 'Slow Mix', and 'Cool Down'. There are buttons to 'Clone Cool ...' and 'Clone Cool ...' for the 'Cool Down' step.



Feature list

Process design and execution

	Core	Expert	Ultimate
Recipe-based process control	✓	✓	✓
Manual and time-based phase transitions	✓	✓	✓
Conditional phase transitions	Up to 2 per process	✓	✓
Parallel process execution	✓	✓	✓
Single device processes	✓	✓	✓
Multi-device processes	Up to 2 devices and 1 sensor	Customizable, pre-defined setups	Create combinations yourself
Interlink devices and create controllers		✓	✓

Data and monitoring

	Core	Expert	Ultimate	Add-on
Annotations	✓	✓	✓	
Timeline synchronization between datasets	✓	✓	✓	
Download of individual datasets	✓	✓	✓	
Customizable dashboard for data visualizaion	✓	✓	✓	
Alerts on dasboard	✓	✓	✓	
SMS and e-mail alerts			✓	✓
User right management	✓	✓	✓	

Data and monitoring (cont.)

	Core	Expert	Ultimate	Add-on
Reports			✓	✓
GMP certification				✓
Custom user rights management				✓
Digital signature				✓
ELN				✓
Streaming webcam				✓

Contact information



OSPIN GmbH
Helmholtzstr. 9
10587 Berlin
Germany

+49 (0) 30 6793 8100

sales@ospin.de

www.ospin.de



Heidolph Instruments GmbH & Co. KG
Walpersdorfer Str. 12
91126 Schwabach
Germany

+49 (0) 9122 9920 0

sales@heidolph.de

www.heidolph-instruments.com